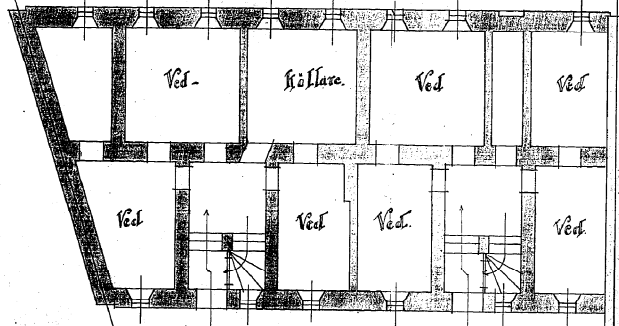


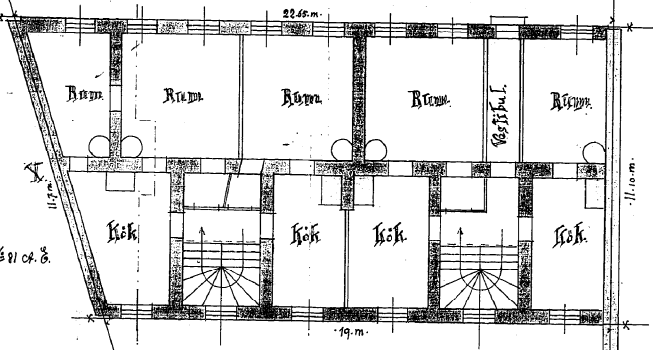
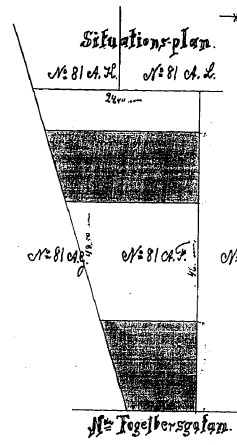
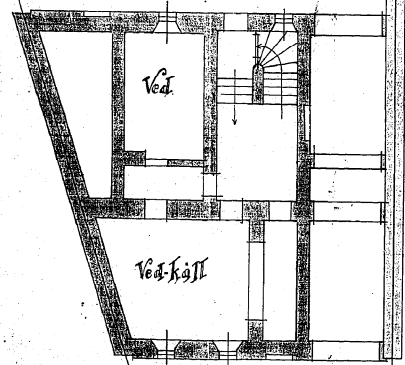
Vasastaden 10 Kv. Enen № 6

№ 7368.
1-7.
A. F. u. a.
Utg. d. 9/11 1897.
C. Jön.

Sittad och fastslagd af Byggnadsnämnden
i Göteborg den 9/11 1897
betygat

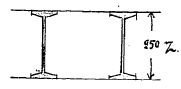


8083



Ytomareal = 791,2 q.mtr.
3 deraf = 283,7 " "
Gårdsmareal = 265,6 " "

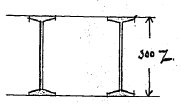
Jernbalkar vid B-C-D-E



Beräkning vid D.
Mur. 2,5 x 2,5 x 0,37 x 1600 = 12500 kg.
Bjälklag. 30 q.m. x 450 = 13500 "
Brandbotten. 7 q.m. x 600 = 4500 "
Vattenkyl. 75 " x 850 = 1875 "
Summa = 32375 "

Fördelade ättrens.
250 % jernbalkar.

Jernbalkar vid A.



Mur. 3,5 x 2,5 x 0,37 x 1600 = 17125 kg.
Fördelade ättrens.
300 % jernbalkar.

