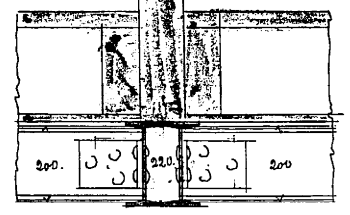


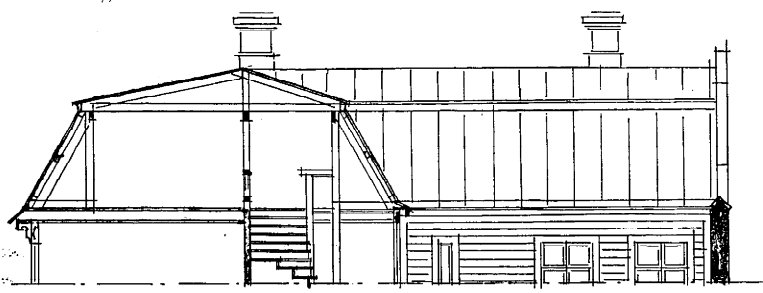
Kopier  
N: 63891-3  
G. n. a. 2/2 1897  
115

# Ritning till Nybyggnad i Fonten N: 41 B i Nya Haga.

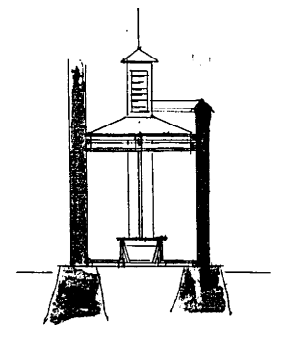
Biljett och fastställt af Byggnadsnämnden  
i Göteborg den 20/2 1897  
Kontygn.  
Kontygn.  
Kontygn.



Detalj vid m.

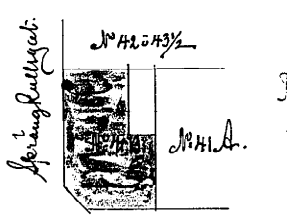


Genomsnitt C-D.

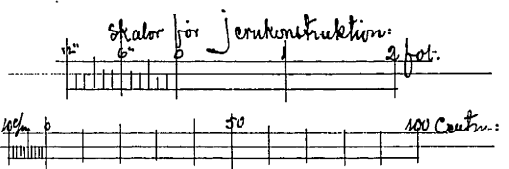


Genomsikt af affädet

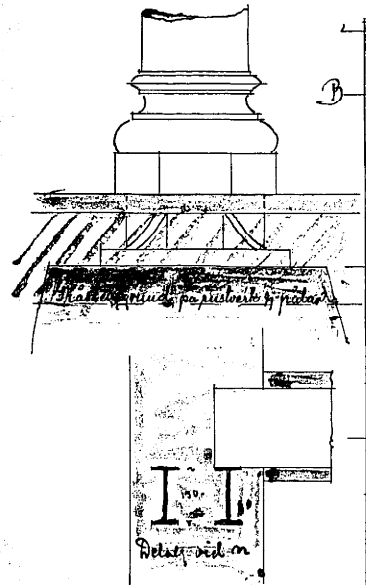
## Situationsplan



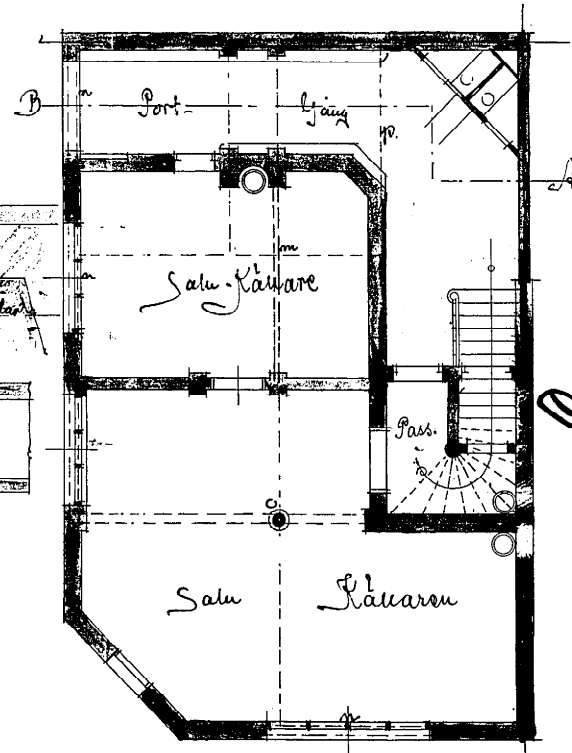
Fontenareal = 144,50 m<sup>2</sup>  
1/5 deraf = 28,90 m<sup>2</sup>  
3 and = 21,00 m<sup>2</sup>



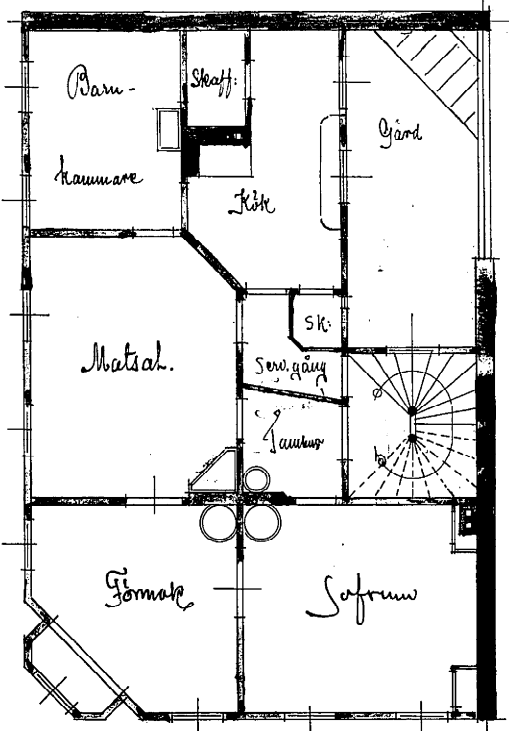
Detalj vid o.



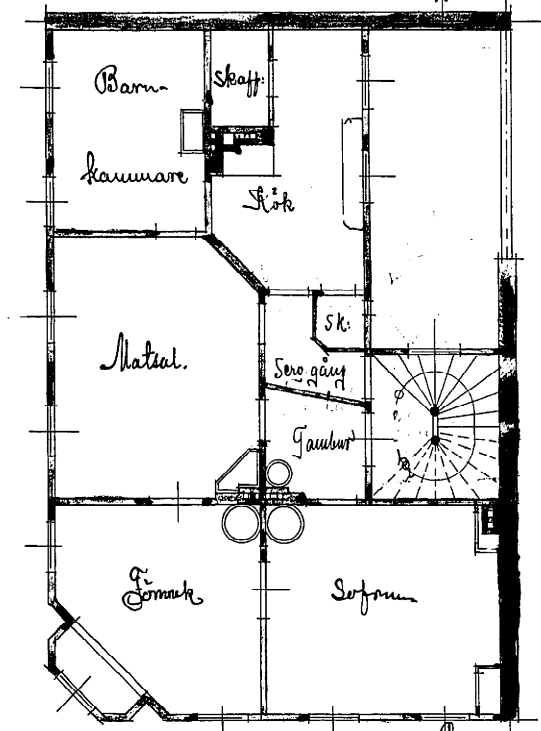
Detalj vid p.



Plan of Källaren



Plan of 1<sup>st</sup> Våningen



Plan of 2<sup>de</sup> Våningen

