

Copia
9146
3. - 3.

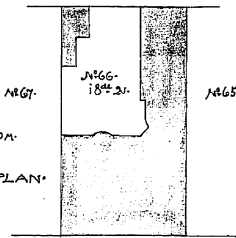
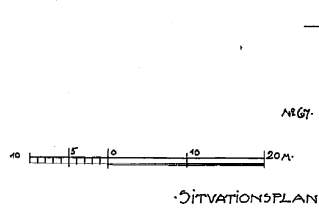
Planofad utan anmätning
Göteborg den 9/2 1904.

Carl Johansson

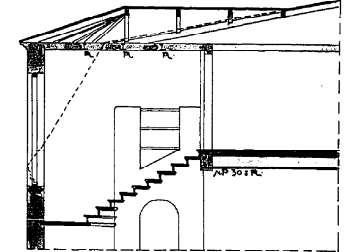
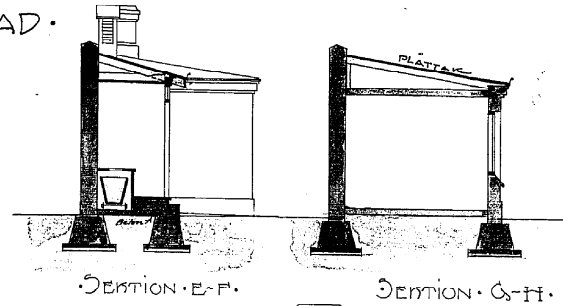
IN. Vallgraven 42 Kv. Luntanu No 7
RITNING TILL NYBYGGNAD Å TOMTEN N^o 66 I Öst 2 V AF GÖTEBORGS STAD.

Öfver och fastslådd af Byggnadsnämnden
i Göteborg den 9/3 1904
L. Johansson

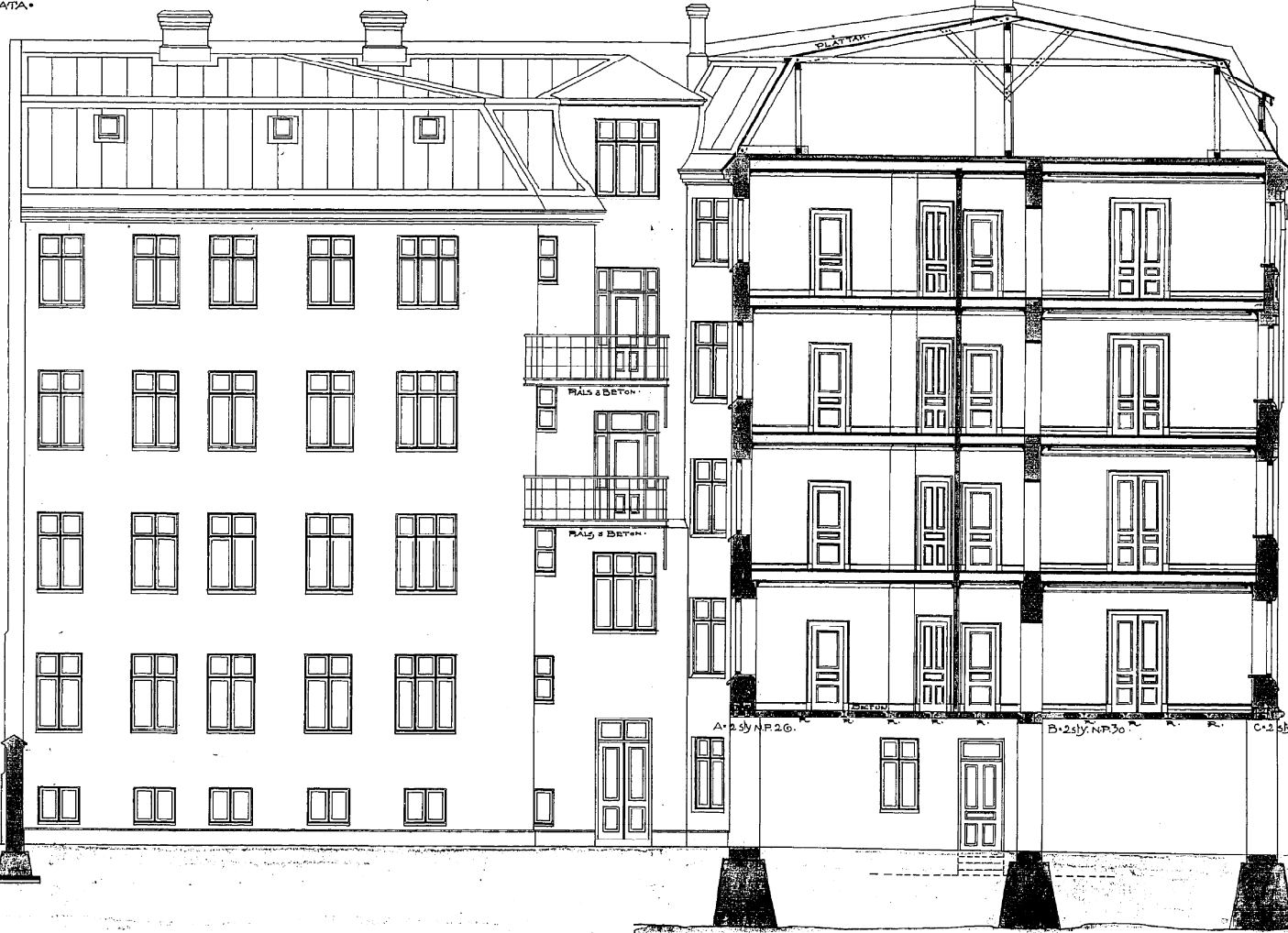
221333



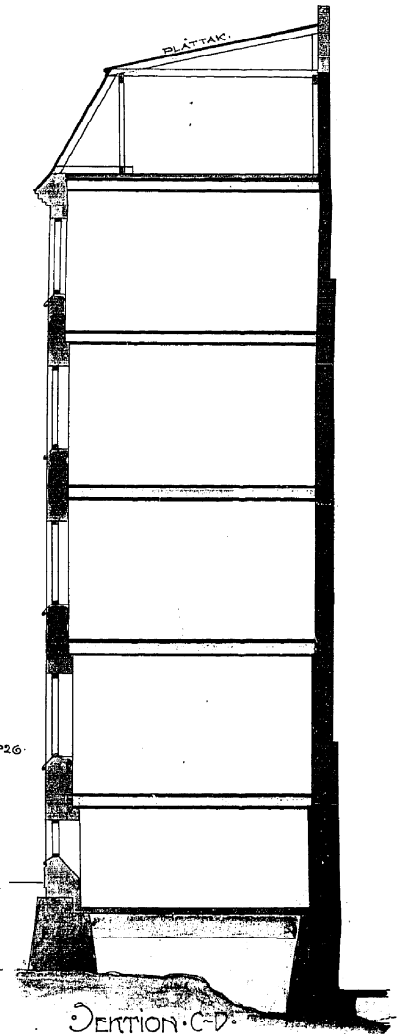
DETALJ VID A-B
JNP N^o 26
280 x 113 x 9,4 mm



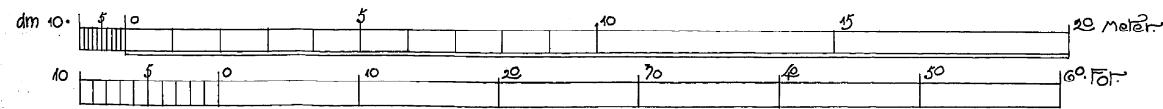
FASAD ÅT GATA



SEKTION A-D & GÅRDSFASAD



SEKTION C-D



Göteborg Feb 1904
Johansson