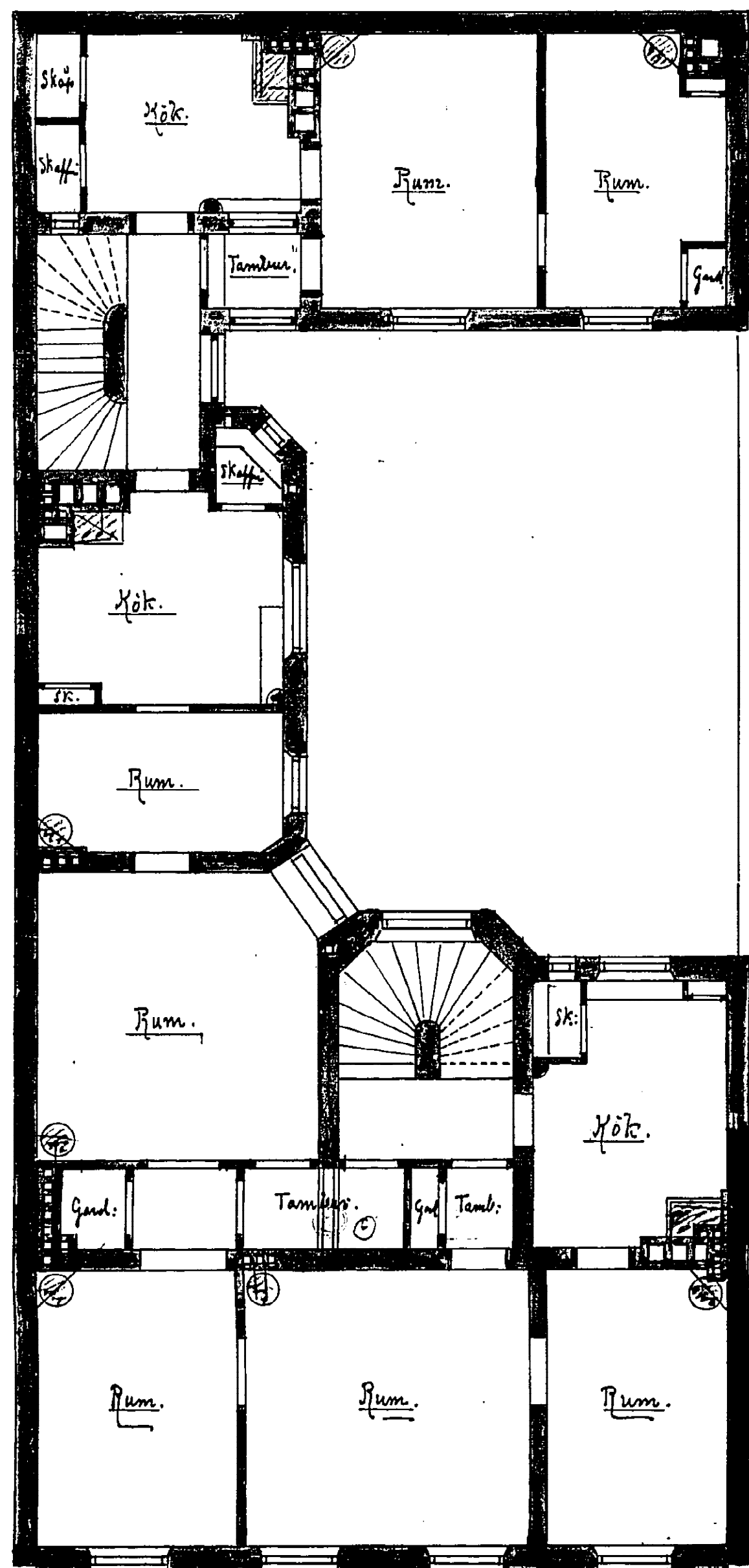
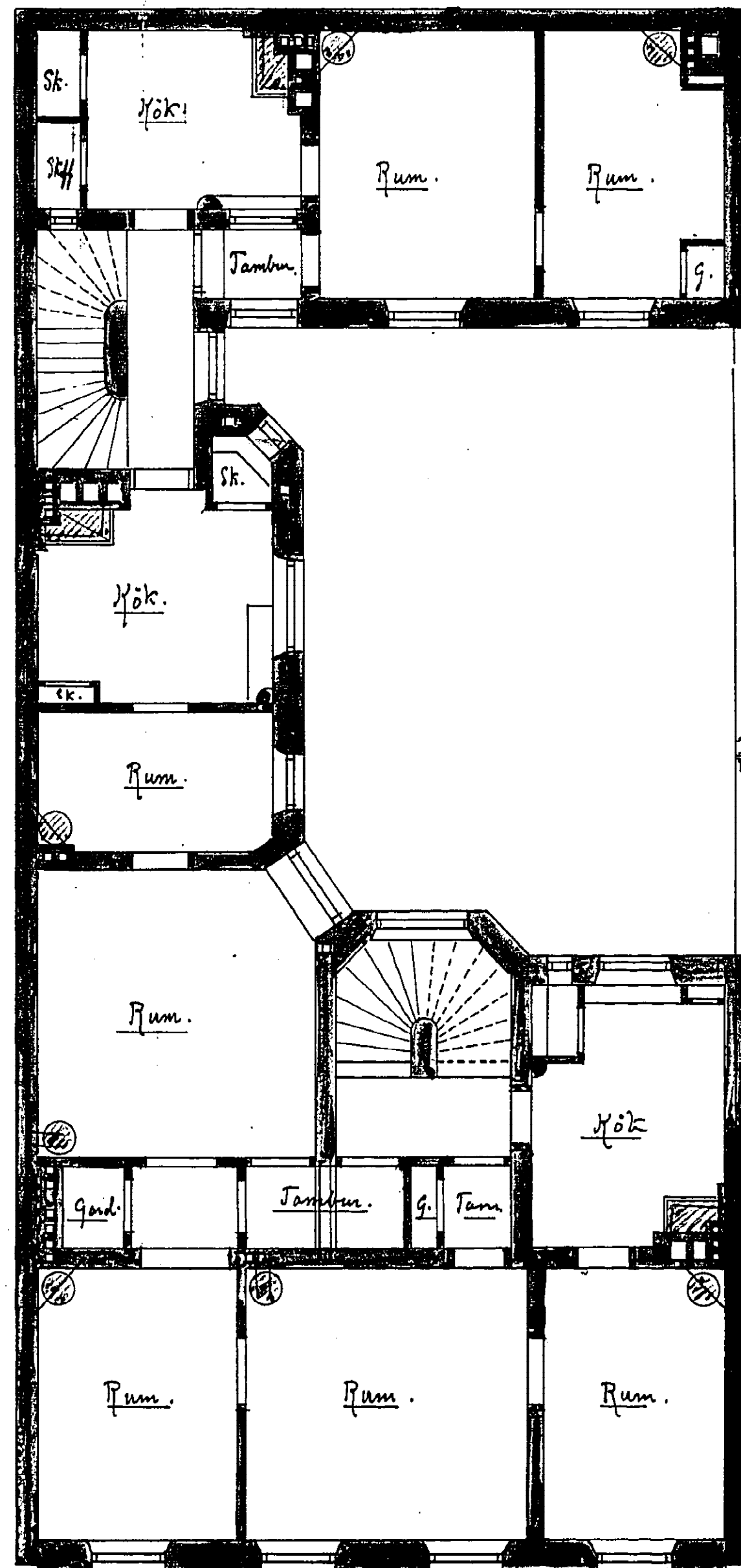


RITNING TILL BEBYGGANDE AF TOMTEN N^o 91 och 92^{de} Nordstaden i Göt. Stads Berget A^o 8 — 16^{te} ROTEN af GÖTEBORGS STAD —

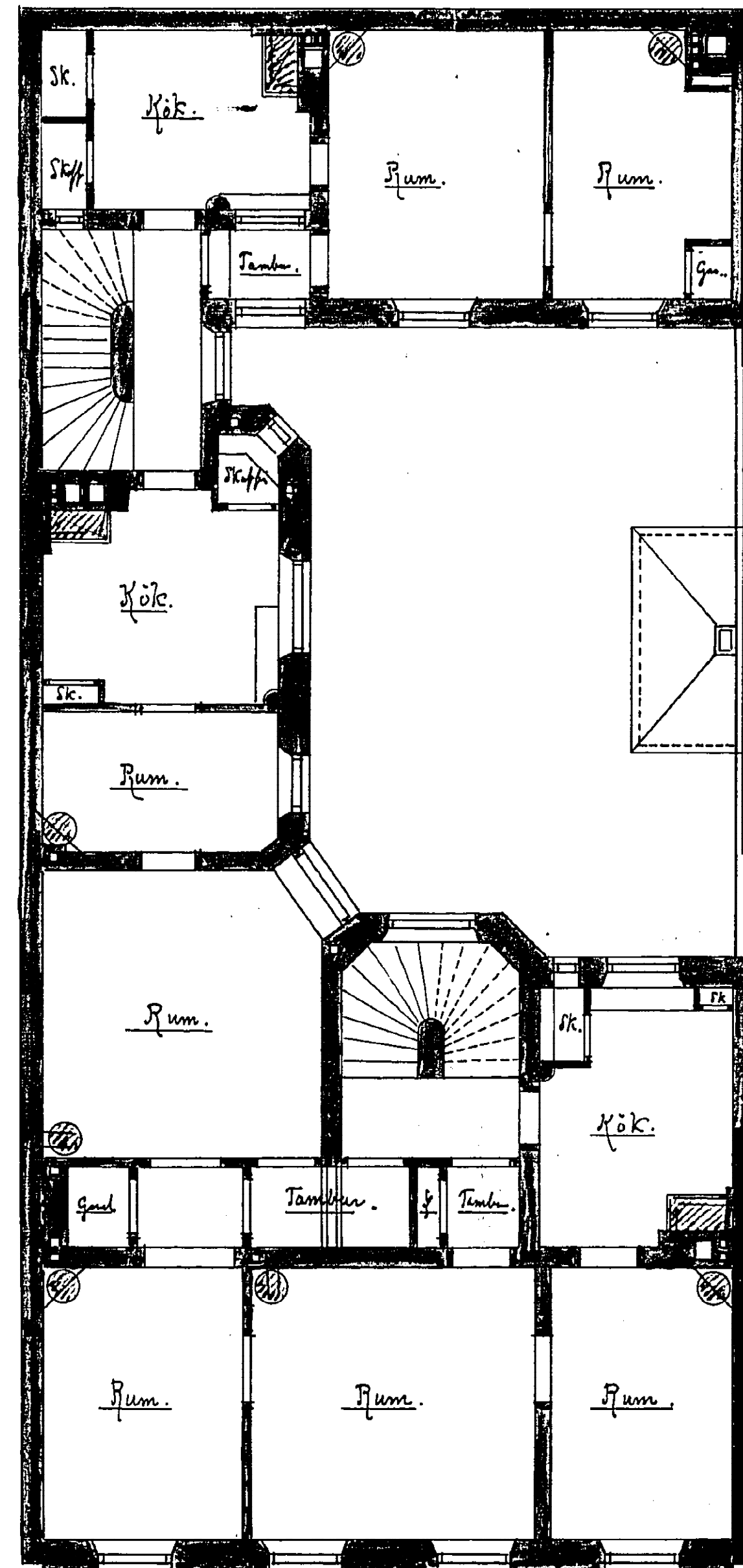
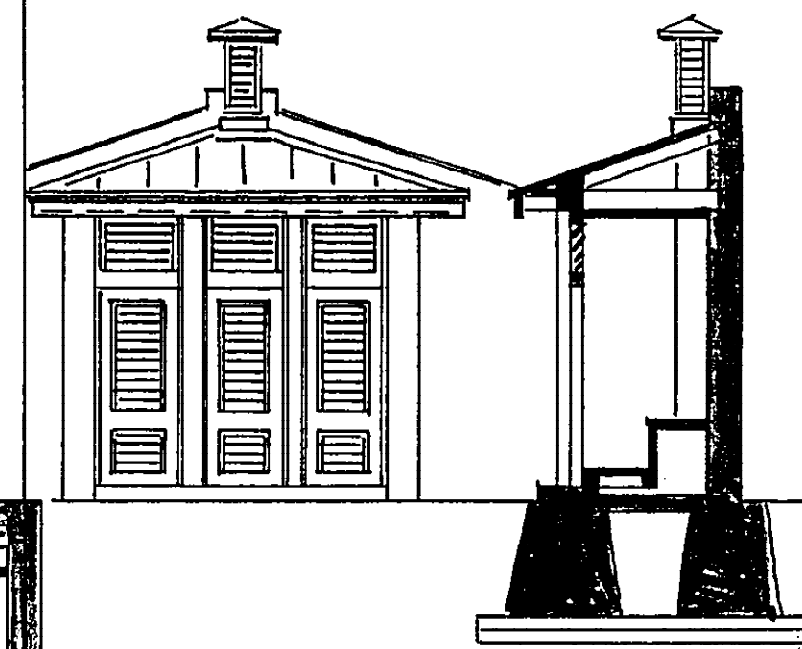
N. 4274
Fr. u. a. 4/11. 1885
P. B.



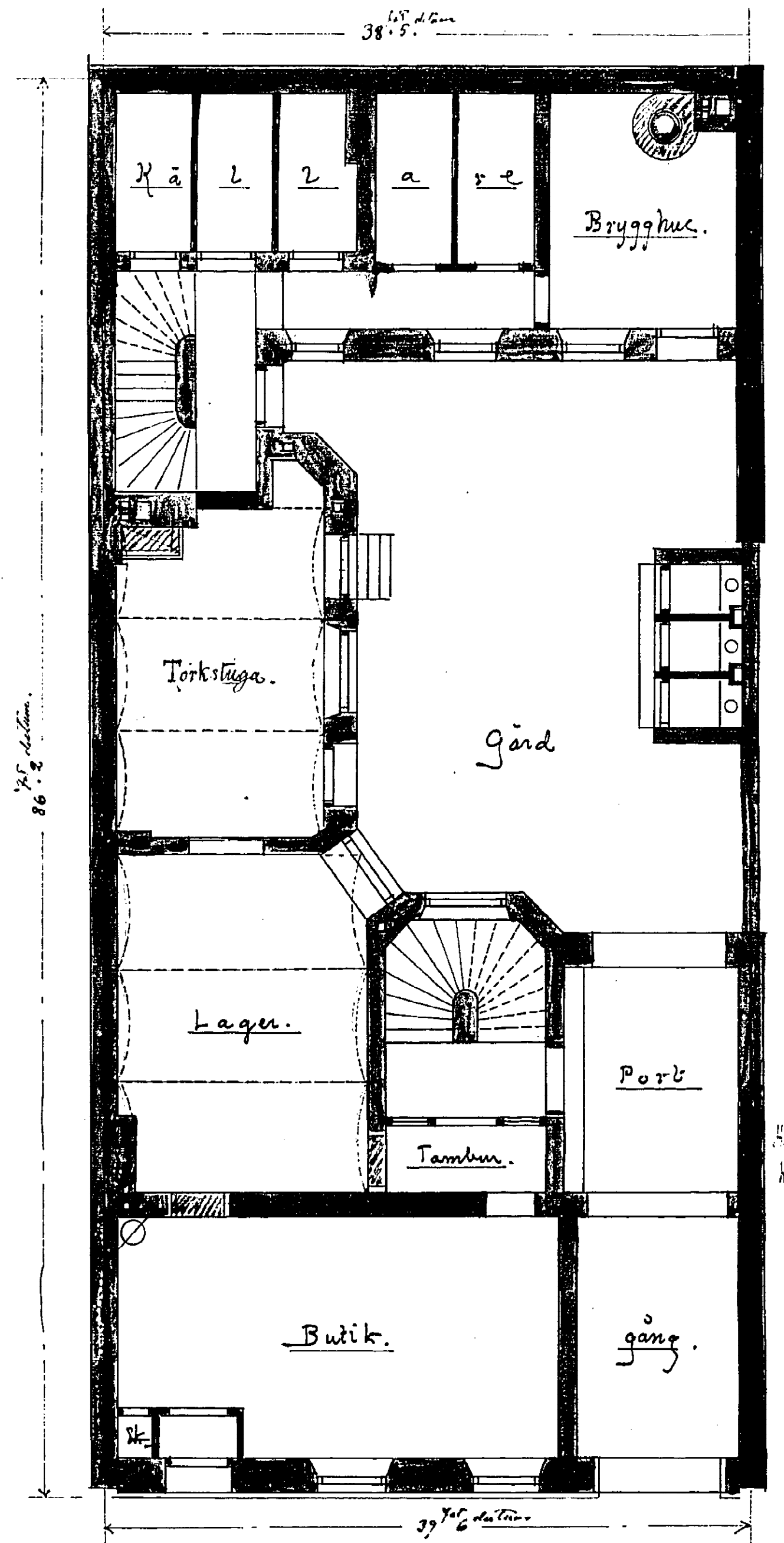
Plan af 3^{de} Våningen.



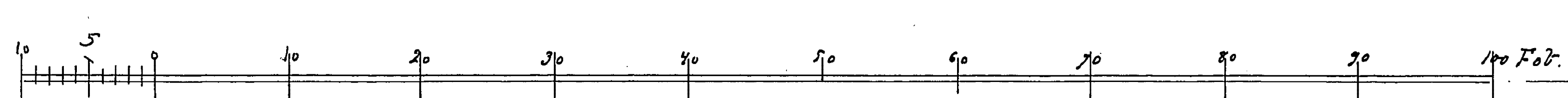
Plan af 2^{de} Våningen.



Plan af Bottenvåningen.



Plan af Källaren.



P. B. 1885.